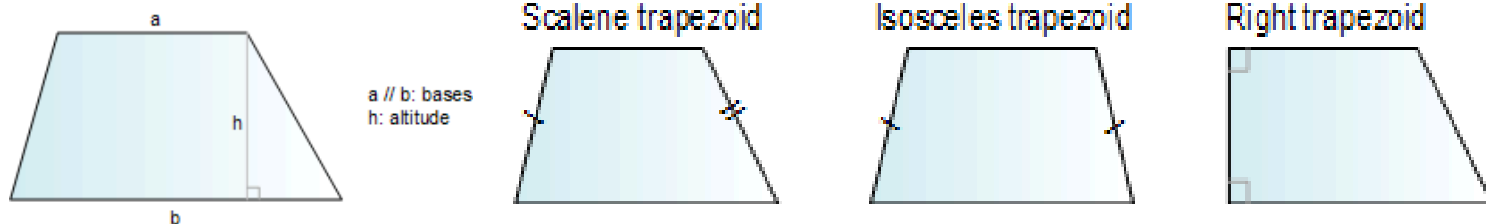


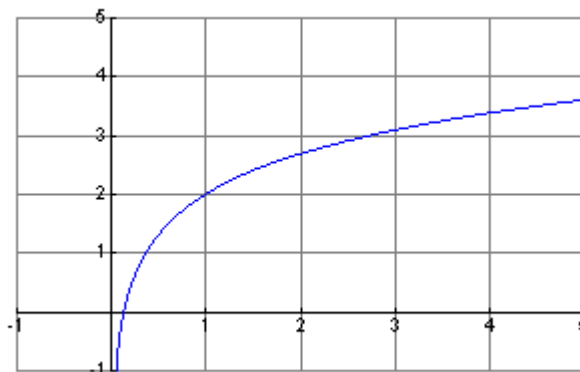
Trapezoid: A *quadrilateral* which has at least one pair of parallel sides.



Trapezoids we will use will be the right trapezoid. The $Area = \frac{h}{2}(b_1 + b_2)$

Example One: Given $f(x) = \ln(x) + 2$, $[1,4]$

A. Approximate the Area with T_3



B. Approximate the Area with T_6